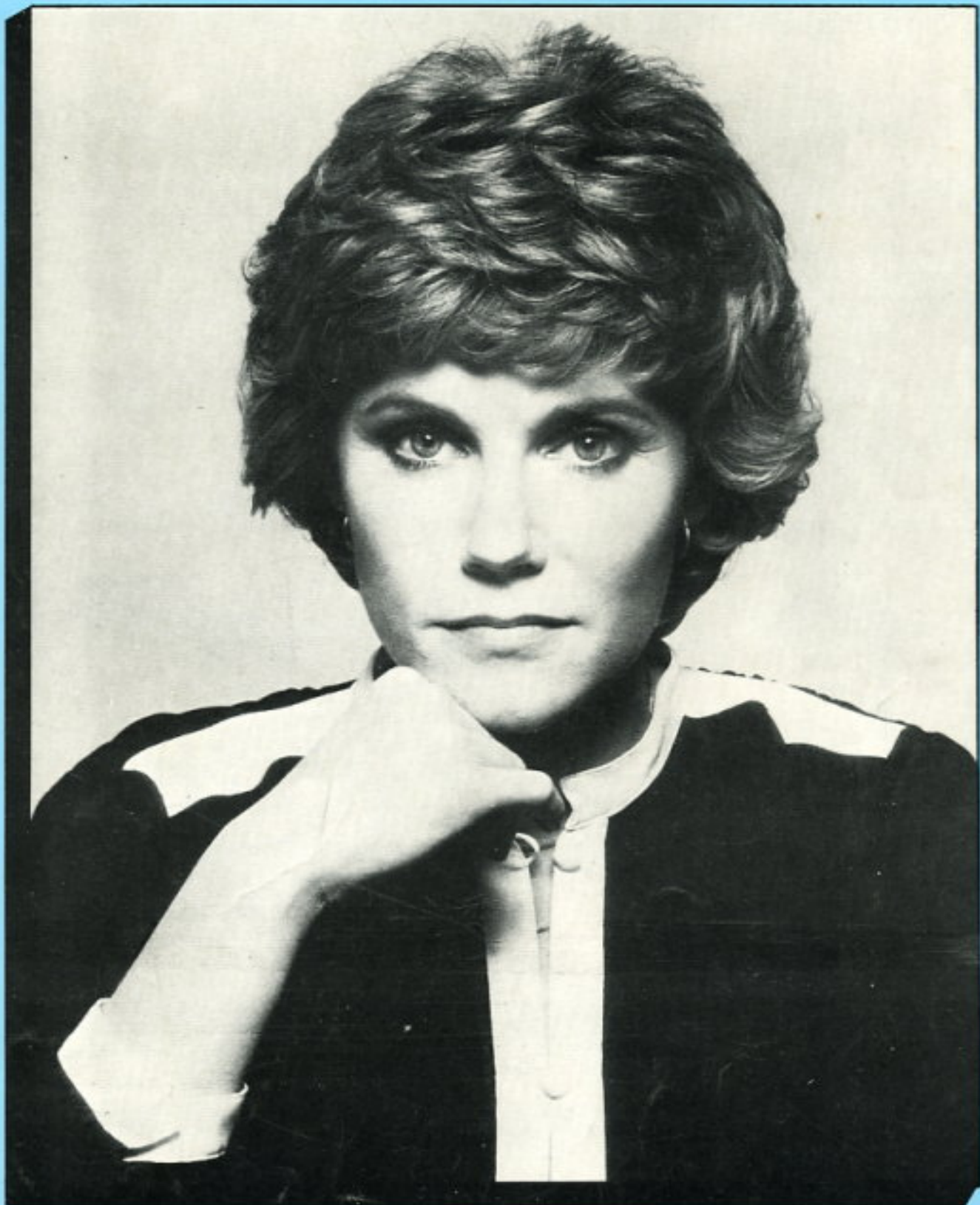


The Wedding Song

COULD I HAVE THIS DANCE?

Words and Music by WAYLAND HOLYFIELD and BOB HOUSE

From the Motion Picture "URBAN COWBOY"



Recorded by **ANNE MURRAY** on CAPITOL Records

THE
WELK

Distributed
by
hbs

From the motion picture "URBAN COWBOY" as sung by ANNE MURRAY

COULD I HAVE THIS DANCE

Words and Music by
WAYLAND HOLYFIELD
BOB HOUSE

Moderately

The piano introduction for the first system consists of four measures. The right hand plays chords in the treble clef, and the left hand plays a bass line in the bass clef. The key signature is two sharps (F# and C#), and the time signature is 4/4. The tempo is marked 'Moderately'.

A A7 D E7 D

Five guitar chord diagrams are shown below the piano introduction. Each diagram shows the fretting pattern for a specific chord: A, A7, D, E7, and D.

1. I'll al - ways re - mem - ber the song they were play - ing the first time — we
2. (I'll) al - ways re - mem - ber that mag - ic mo - ment, when I held — you

The piano accompaniment for the second system consists of four measures. The right hand plays chords and the left hand plays a bass line. The tempo is marked 'mp' (mezzo-piano).

E7 A Bm7/E A A7

Five guitar chord diagrams are shown below the piano accompaniment for the second system: E7, A, Bm7/E, A, and A7.

danced close and I knew. As we swayed to the mus - ic — and
close to me. As we moved to - geth - er, —

The piano accompaniment for the third system consists of four measures. The right hand plays chords and the left hand plays a bass line.

83 - 4590 - 3

Copyright © 1980 by MAPLEHILL MUSIC, VOGUE MUSIC (c/o THE WELK MUSIC GROUP, Santa Monica, CA. 90401)
and ONHISOWN MUSIC (c/o OAS MUSIC GROUP, Nashville, Tennessee 37203)

International Copyright Secured Made in U.S.A. All Rights Reserved
Any copying, including photocopying, arranging or adapting of this work without the consent of the owner is an infringement of copyright.

D E7 D E7 A E Bm7 E7 G#

held to each oth-er, — I fell in love with you. }
 I knew for - ev - er — you're all I'll ev - er — need. } Could

Chorus: A A7 D

I have this dance for the rest of my life? Would


E7 D E7

you be my part - ner — ev - 'ry night?

A A7 D Dm

When we're to - geth - er, it feels — so right. — Could



To Coda  E7

I have — this dance for the rest of my —

1. A Bm7/E 2. A E Bm7/F# E7/G# *D.S. al Coda*

life? 2. I'll life? Could

Coda  E7 A

rest of my — life? —

Bm7 E7 A