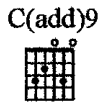
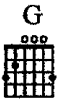


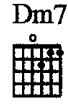
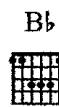
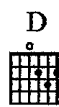
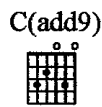
YOU'RE THE INSPIRATION

Words and Music by PETER CETERA
and DAVID FOSTER

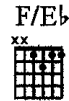
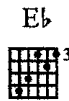
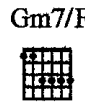
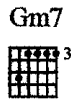
Slow Rock



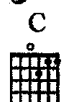
With pedal



1. You know our love was meant to be ____
2. (See additional lyrics)



the kind of love ____ that lasts ____ for - ev - er. ____



And I want you here with me

Gm7



Gm7/F



E♭



from to - night _ un - til the end ___ of time.



F/A



B♭



E♭/G



A♭(add2)



D/F#



Gm C/E



You ___ should know ___ ev - ery - where I go; ___ al - ways on _ my mind, _ in my heart, _



cresc.

F



D/F#



G



A/C#



D



D/F#



___ in my soul, _ ba - by. You're the mean - ing of my life, _



f

G



D/A



A



D



D/F#



you're the in - spi - ra - tion. You bring feel - ing to my life, _



G



D/A



A



F



C/F



you're the in - spi - ra - tion.

Wan - na have you near me, I

B \flat /F



B \flat m/F



1. F/C



B \flat /C



wan - na have you near me say - ing _____

no one needs you more _ than I _

C



F(no3rd)/E \flat



F(no3rd)



B \flat



need

you.

mp

f

E \flat



F



||2. F/C



B \flat /C



C9



B \flat /C



A/C#



And I

no one needs you more than I

need

(no one needs you more _ than I . .

mp

D

D/F#

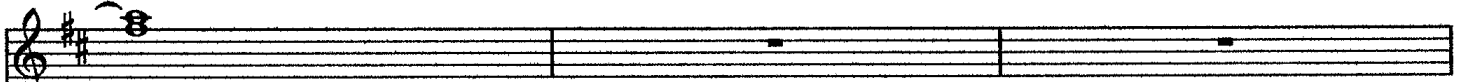
G

D/A

A

D

D/F#



you.
_____)



G

D/A

A

F

C/F

Bb/F

Bbm/F



Wan-na have you near me, I wan-na have you hear me say yeah, —

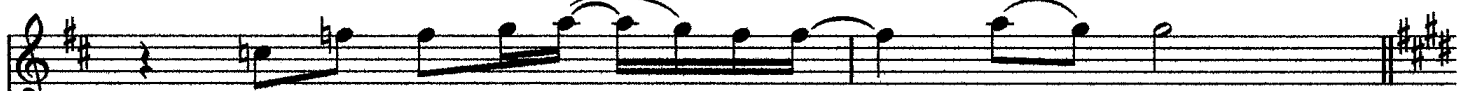


F/C

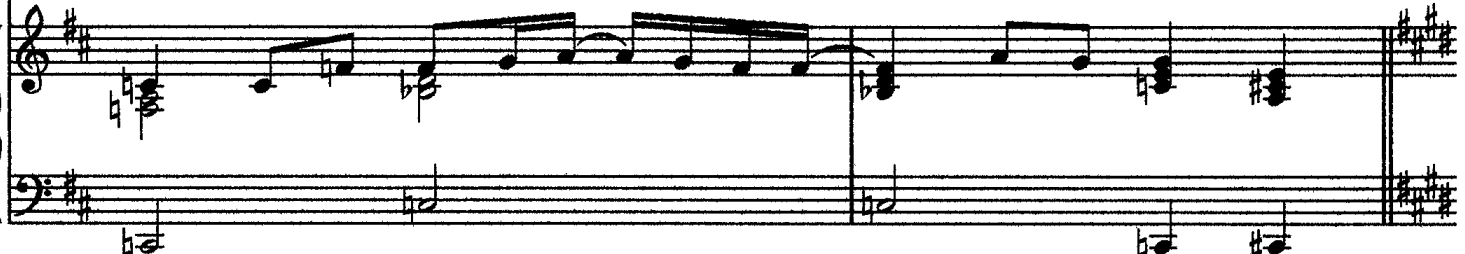
Bb/C

C

A/C#



no one needs you more _____ than I _____ need _____ you.



E

E/G#

A

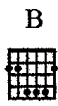
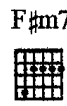
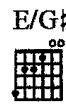
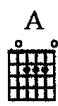
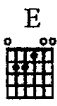
E/B

B

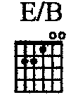
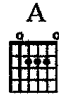
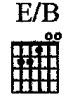
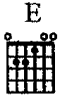


you're the mean - ing of my life, — you're the in - spi - ra - tion.

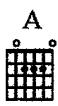
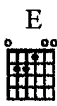




You bring feel - ing to my life, — you're the in - spi - ra - tion. When you



love some - bod - y, till the end — of time; when you



*Repeat ad lib.
and Fade*

love some - bod - y, al - ways on — my mind. no one needs. you more than I. When you

Additional Lyrics

2. And I know (yes, I know)
 That it's plain to see
 We're so in love when we're together.
 Now I know (now I know)
 That I need you here with me
 From tonight until the end of time.
 You should know everywhere I go;
 Always on my mind, you're in my heart, in my soul.

(To Chorus:)